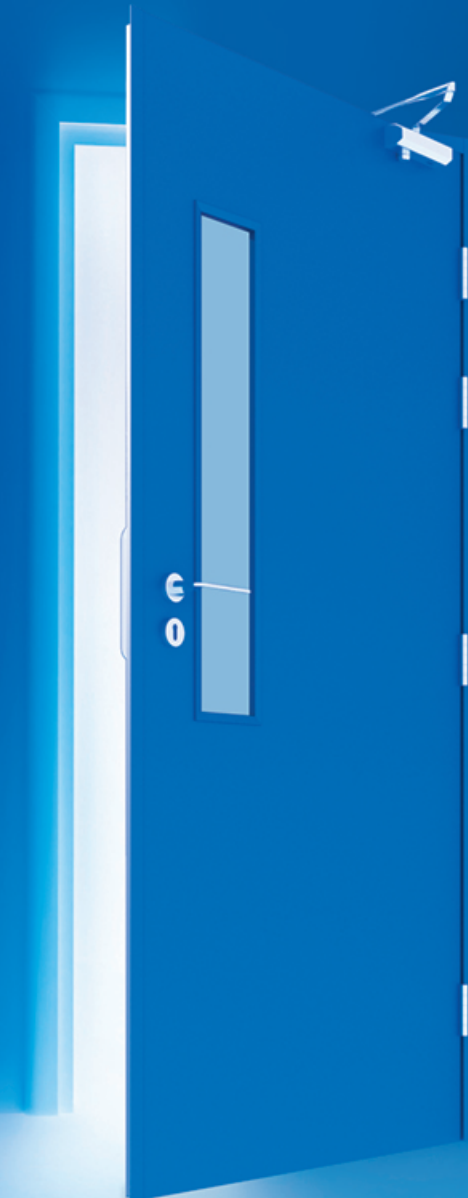




MARRYAT & SCOTT EGYPT

Fire Rated Steel Doors & Windows Manufacturer

Fire-Rated & Non-Fire Rated
Steel Doors Since 1978



RELIABILITY

A TRUSTED NAME FOR OVER 4 DECADES

Marryat & Scott Egypt (MSE) was established in 1978 on 20,000 m² of land situated at KM 28 of the Cairo – Alexandria desert road in the Abu Rawash Industrial Zone.

The factory is equipped with computerized and specialized machines that allow our dedicated team of engineers to produce highly technical and customizable products with excellent quality. Over the decades MSE has developed a strong reputation in fire rated and non-fire rated steel door and window manufacturing.

Our products are certified by Intertek and tested by Thomas Bell-Wright International Consultants, the factory has also been certified according to the standards of ISO 9001, ISO 14001 and ISO 4500. These certificates and approvals demonstrate our ongoing and continued commitment to providing quality products and services that meet our customers needs.



VARIETY

EXTENSIVE PRODUCTION OF SHEET METAL WORKS

MSE factory production is specialized in the manufacturing of sheet metal work products including:

- Fire rated steel doors and frames
- Non-fire rated steel doors and frames
- Fire & non-fire rated steel windows
- Sliding detention doors
- Stainless steel doors



Fire & non-fire rated
steel windows



Sliding steel doors



Fire rated steel doors
and frames



Stainless steel doors



Stainless steel
cladding doors



Non-fire rated steel
doors and frames

QUALITY

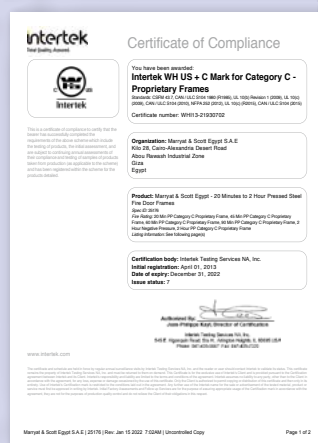
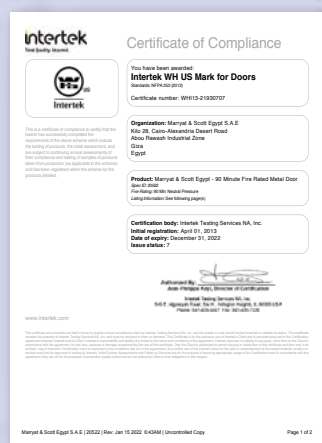
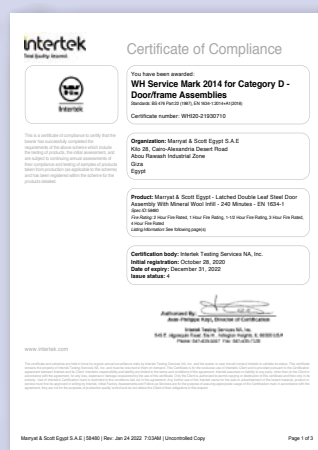
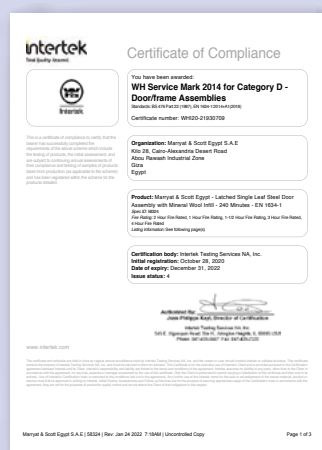
CERTIFIED STEEL DOORS & FRAMES

Marryat & Scott Egypt manufactures a wide range of steel doors and frames that meet the diverse needs of our clients. Our steel doors are:

- **Designed** to meet the needs of owners, consultants, contractors and civil defense.
- **Produced** in many sizes and gauges for both interior and exterior use.
- **Manufactured** to ensure trouble free operation, resist environmental stress and heavy-duty use, and provide any degree of security.

By using only the highest quality materials & advanced manufacturing techniques, Marryat & Scott Egypt ensures reliable products.

Manufactured in accordance to NS 476 Part 22, EN 1634-1, NFPA 252, NFPA 257, UL 10(B), UL 10(C), and ASTM E2010 as certified by INTERTEK.



Certificates

- Latched single leaf steel door assembly 240 mins - EN 1634-1
- Latched double leaf steel door assembly 240 mins - EN 1634-1
- 90 mins fire rated door - UL
- 20 mins to 2 hour rib-stiffened, latched, steel fire door
- 20 mins to 2 hour pressed steel fire rated door frame - UL

FLEXIBILITY

LIMITLESS APPLICATIONS & INNOVATIONS

The applications of Marryat & Scott Egypt door and frame products are appropriate and effectively limitless. Including:

- Apartment buildings, office buildings, hotels, medical facilities, schools, court houses, prisons, military barracks, department stores, warehouses, industrial buildings, convention centers, airports, and more.
- Marryat & Scott Egypt doors and frames afford architects, contractors, and owners a remarkable degree of design freedom in atypical situations, where standard size or profile products are inappropriate.

With the proprietary steel construction techniques and capabilities of Marryat & Scott engineering, our design professionals have the opportunity to innovate and create virtually any solution and do so within a reasonable budget and timely fashion.



SECURITY

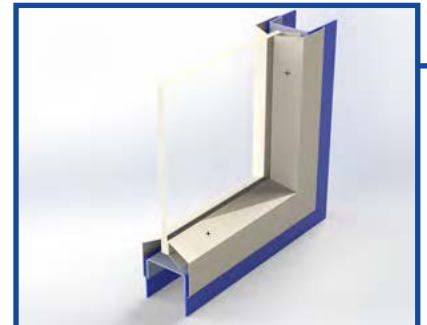
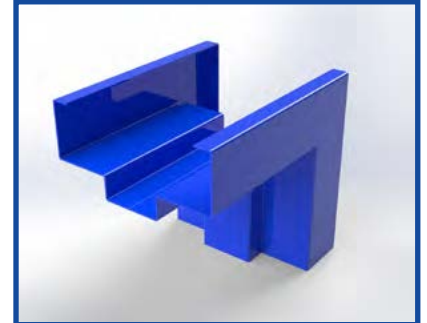
FIRE RATED DOOR REQUIREMENTS

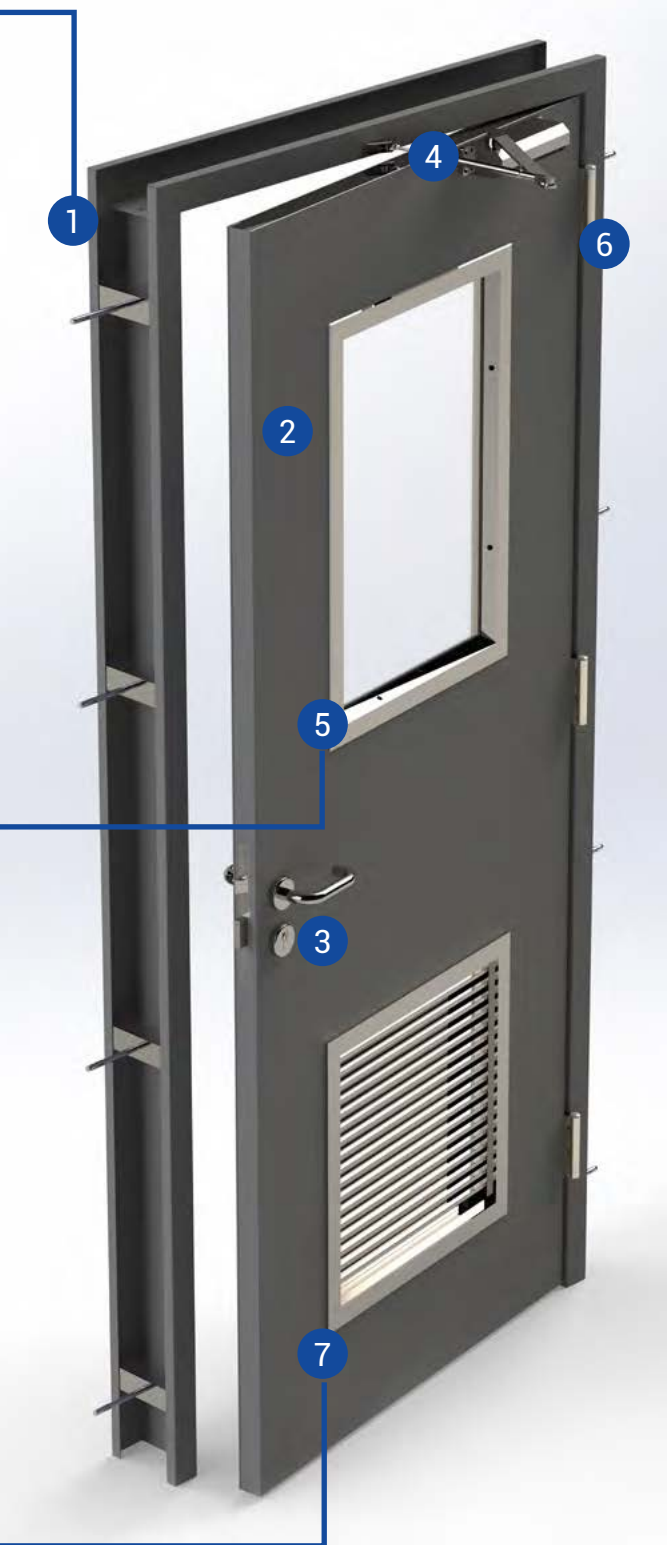
- Must be self-latching.
- Must be self-closing.
- Must have fire rated hardware.
- Must have fire rated hinges.
- Doors swinging in pairs that require astragals must have at least one overlapping astragal.
 - Pairs of doors within a means of egress shall be equipped with astragals that inhibits the free use of either leaf.



METAL DOOR FUNDAMENTALS

- Metal Frame** 1 Manufactured from 1.5mm to 3.0mm sheet metal, delivered in two forms: corner welded or knock down type in a large variety of frame profiles.
- Metal Leaf** 2 Manufactured from 1.2mm to 2.0mm sheet metal, delivered with two core types: steel stiffened with rockwool or honeycomb.
- Lock** 3 Marryat & Scott doors are manufactured to accommodate any type of lock according to project and consultant hardware specifications.
- Door Closer** 4 All doors are manufactured for standard overhead door closer installation. Upon request doors can also be manufactured for concealed door closer installation.
- Vision Panel** 5 Marryat & Scott doors are fitted with our custom made and tested vision panel; vision panels can be provided in a large variety of sizes and glass types.





Hinges 6 Marryat & Scott doors are manufactured to receive all types of hinges according to project and consultant hardware specifications.

Louvers 7 Fire rated and non-fire rated louvers can be fitted into all doors to meet MEP requirements.

Astragal Marryat & Scott double doors are manufactured with an integrated astragal as standard; other types of astragals are available upon request.

Finish All doors are finished with polyester powder coating with client selection of RAL color, other finish types are available upon request.

Optional Marryat & Scott doors can all be fitted with a large variety of seals for weather proofing and acoustical properties; drop seal, adhesive and groove seal, thresholds and much more.

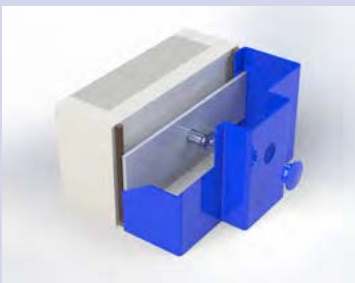
DURABILITY

METAL FRAMES

Marryat & Scott door frames are manufactured from galvanized sheet metal, delivered in two forms: corner welded or knock down type in a large variety of frame profiles. Frames are all fitted with hinge reinforcement plates, lock strike plate, fixing straps, hardware mounting plates, grouting guards and a temporary frame spreader via welding. Frames are suitable for general purpose use and fire rated applications. All frames are available with fire resistance performance up to 120 minutes according to UL 10(b), UL 10(c), NFPA252.

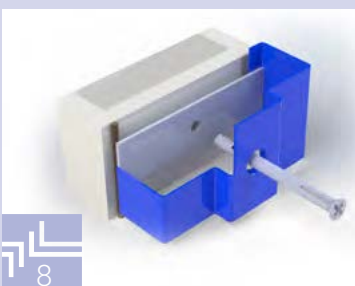
- 1.5mm or 2.0mm galvanized steel sheet thickness as standard, 3.0mm is available upon request
- Frame depth is 150mm as standard, available up to 350mm upon request
- Corner type is corner welded as standard and can be provided as knock down type upon request
- Hinge reinforcement plates are manufactured of 4.0mm galvanized steel sheet with pre-drilled and threaded holes
- All frames are finished with polyester powder coating with client selection of RAL color, other finish types are available upon request
- A large variety of seals can be fitted to the frame for weather proofing, smoke control, and acoustical properties.

FRAME FIXING



Expansion Anchor with Metal Cap (EAMC)

Used for concrete masonry openings, expansion anchor secures the frame to the rough opening. Frame opening is sealed with a metal cap is painted to match to the frame color. Frame is punched and dimpled with welded anchor reinforcement plate.



Expansion Anchor with Sealed Frame Opening (EASFO)

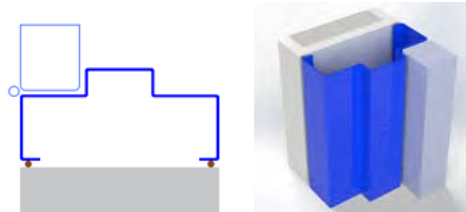
Used for concrete masonry openings, expansion anchor secures the frame to the rough opening. Frame opening is left as is or sealed with putty and painted to match the frame color upon request. Frame is punched and dimpled with welded anchor reinforcement plate. Expansion anchor is flush with frame face.

FRAME PROFILES

A large variety of frame profiles are available to suit project and consultant specifications. All frames can be single rebate for a flush or recessed appearance and double rebated to match the overall width of the wall for a “wrap around” appearance.

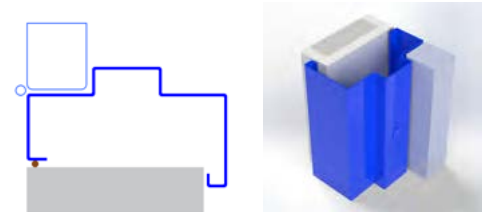
Type SFD

Standard Frame
Double Rabbit



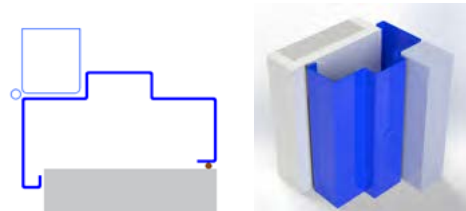
Type SFDA

Standard Frame Double Rabbit
with Arc Against Hinge Side



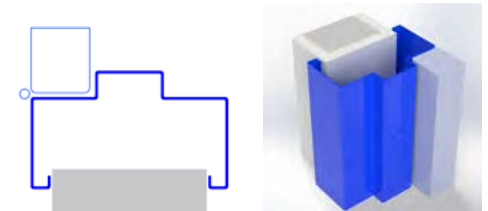
Type SFDH

Standard Frame Double Rabbit
with Arc Hinge Side



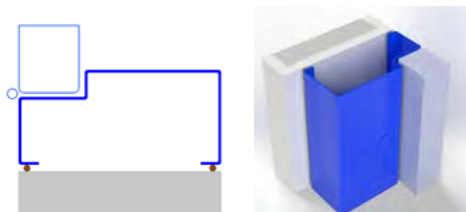
Type SFDR

Standard Frame Double Rabbit
Architrave Rap Around



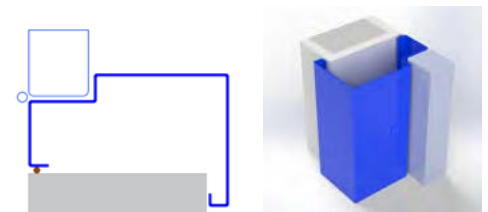
Type SFS

Standard Frame
Single Rabbit



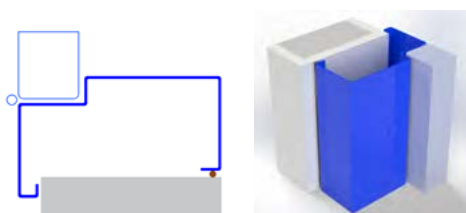
Type SFSA

Standard Frame Single Rabbit
with Arc Against Hinge Side



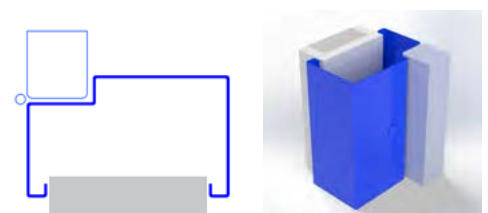
Type SFSH

Standard Frame Single Rabbit
with Arc Hinge Side



Type SFSR

Standard Frame Single Rabbit
Architrave Rap Around



SPECIFICATIONS

FIRE RATED DOORS

Size	Custom sizes available up to 1500mm wide x 3000mm high (single) & 3000mm wide x 3000mm high (double)
Fire Rating	Up to 60/90/120/240 min as per European / British & American Standards
Material	Cold Rolled Coil (CRC), Galvanized Steel (GI)
Leaf Steel Sheet Thickness	≥1.25mm
Frame Steel Sheet Thickness	≥1.50mm
Door Leaf Thickness	45-47mm
Core Construction	Steel Stiffened Rockwool or Honeycomb Core
Paint	Electrostatic Powder Coating Liquid Painting (Epoxy, DOKO & Oil Paint) Finish / Touch up paint applied at site
Frame Anchoring	Expansion Type (for masonry walls) Z-type (for dry walls) Other types available upon request
Frame Corner	Welded Knockdown
Frame Jamb Depth	From 100-500mm standard (150mm)
Door Construction	Interlocking / Welded
Handing	Right Hand (Inward or Outward) Left Hand (Inward or Outward)
Hardware	Must be fire rated Please contact for options
Compliance	Manufactured in accordance to BS 476 Part 22, EN 1634-1, NFPA 252, NFPA 257, UL 10(B), UL 10(C) and ASTM E2010 certified by Intertek
Optional	Fire Rated Automatic Louver (up to 610mm x 610mm) Vision Panel (Up to 500mm x 1000mm)





SPECIFICATIONS

NON-FIRE RATED DOORS

Size

Custom sizes available
please contact for more information

Material

Cold Rolled Coil (CRC), Galvanized Steel (GI),
Stainless Steel (SS)

Leaf Steel Sheet Thickness

1.25 - 3.00mm

Frame Steel Sheet Thickness

1.25 - 3.00mm

Door Leaf Thickness

≥45mm

Core Construction

Steel Stiffened Rock Wool Core or
Honeycomb Core

Paint

Electrostatic Powder Coating
Liquid Painting (Epoxy, DOKO & Oil Paint)
Finish/Touch up paint applied at site

Frame Anchoring

Expansion Type (for masonry walls)
Z-type (for dry walls)
Other types available upon request

Frame Corner

Welded Type

Frame Jamb Depth

From 100-500mm standard (150mm)

Door Construction

Interlocking / Welded

Handing

Right Hand (Inward or Outward)
Left Hand (Inward or Outward)

Hardware

According to project specification
Please contact for options and pricing

Optional

Louver, Sand Trap, Vision Panel,
Half Glass and other custom options
upon request



SPECIFICATIONS

SLIDING DOORS

Door Leaf Sizes

Custom sizes available
please contact for more information

Material

Cold Rolled Coil (CRC),
Galvanized Steel (GI)

Door Steel Sheet Thickness

1.2 - 3.00mm

Door Movement Mechanism

Wheel reel
Movement wheels
Wheel hangers
Automatic/Manual

Door Thickness

45 - 76mm

Core Construction

Steel Stiffened Core

Paint

Electrostatic Painting,
Liquid Painting (Epoxy, Doko, and
Oil Paint), Finish/Touch Up paint
applied at site

Door Direction

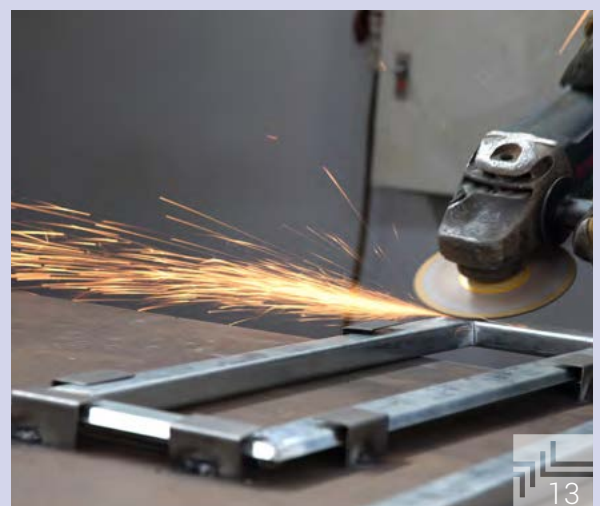
Pull handles
Sliding both sides
Sliding one side

Hardware

According to project specifications

Optional

Louver, Personal/Access Door,
Glass/Vision Panel, Window



DIVERSITY

RANGE OF DOOR TYPES

Non-Fire Rated	Fire Rated	Door Type
✓	✓	Flush (F)
✓		Full Louver (FL)
✓	✓	Vision Lite (V)
✓		Glass Louver (GL)
✓		Half Glass (HG)
✓	✓	Narrow Lite (N)
✓	✓	Narrow Lite 2 (N2)
✓	✓	Bottom Louver (BL)
✓		Double Louver (DL)
✓		Sliding Door (SD)
✓		Stainless Steel (SS)
✓	✓	Stainless Steel Cladding (SC)



Flush (F)



Full Louver (FL)



Vision Lite (V)



Glass Louver (GL)



Half Glass (HG)



Narrow Lite (N)



Narrow Lite (N2)



Bottom Louver (BL)



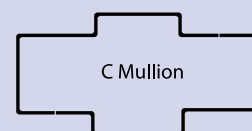
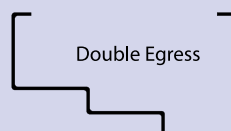
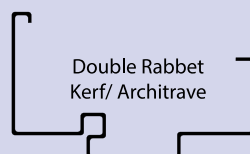
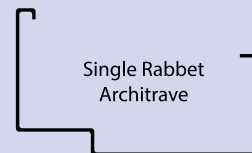
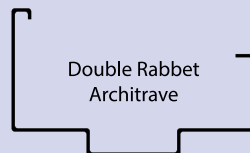
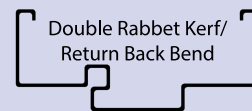
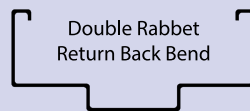
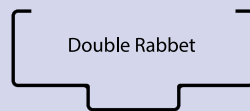
Double Louver (DL)



STABILITY

MEETING FRAME REQUIREMENTS

- Provide metal frames of 1.2-3.0 mm thick galvanized or cold rolled sheet metal.
- Fabrication frames with mitered continuously welded corners.
- Provide frames with suitable anchors or expansion shields for fixation with masonry, concrete, gypsum board or steel structure.
- Provide frames with necessary reinforcement for surface applied hardware.
- Provide removable spreader bar across bottom of frames.
- During installation, interior of frames are filled with cement/sand mortar grouting after fixation.



DEPENDABILITY

DELIVERING QUALITY PRODUCTS

- Vodafone Building (Tanta)
- Logistic Building for Development of the Port Adbih Sea (Suez)
- MetLife HQ (New Cairo)
- Capital Business Park
- SICON Tower

- Carrefour Express (Mokattam)
- Lulu Hyper Market (Emerald Mall)
- Majarrah
- Tanta Mall
- Katameya Mall
- District 5
- Open Air Mall Madinty

- Marriot Mena House
- Sheraton Hotel (Cairo)
- Four Seasons (Nile Plaza)
- Golden Coast (Sharm El Sheikh)
- Fairmont Nile City

ADMINISTRATIVE



SHOPPING MALLS



HOSPITALITY



RESIDENTIAL



RESTAURANTS



EDUCATIONAL



- Mivida (PK72)
- R3 & R5
- Celia
- Block 36&39 SODIC
- District 5

- McDonalds Egypt (Select Branches)
- R3 Food Court
- Seniorita Food Industries
- La Poire Factory

- New Giza University
- Lycee Francais Du Caire
- American School
- Mansoura University
- Sinai University
- Alamen University
- Nursing College (Fayoum University)
- Arab Academy for Science

- Audi Bank
- Al Baraka Bank
- Qatar National Bank
- National Greek Bank
- Emirates NBD Bank
- Al Ahli Bank
- Commercial International Bank
- Bank of Alexandria
- Banque du Caire
- Egyptian Gulf Bank
- Arab African Bank

BANKS



- Dar Al Fouad Hospital (Madinat Nasr)
- Neurosurgery Hospital (Cairo)
- Neurocare Center (6th of October)
- Sohag Hospital
- Egyptian International Hospital
- Shalateen Central Hospital
- Vacsera Egypt HQ
- Endemic Disease Institute
- Nasser Medical Center

MEDICAL



- Wadi Al Natroun Prison
- Khanka Police Camp
- Police Sports Union
- Cairo Police HQ
- Police Academy
- Council of State

GOVERNMENT



INDUSTRIAL

- Samsung Tablet Factory
- Petrojet (Kotsica Garage)
- Ain Sokhna Power Station
- October City Power Station
- Ibn Sina Factory
- Power Transformer Plant Marassi
- ECC Batch Plant Building



AUTOMOTIVE

- Mansour Chevrolet (Mohandseen HQ)
- Ghabour (Abu Rawash, Katameya)
- Mercedes Benz Showroom
- Hyundai Showroom (Alexandria)



EMBASSIES

- KSA Embassy Cairo
- Denmark Embassy



Factory: Kilo 28 Cairo - Alex. Desert Road,
Abou Rawash Industrial Zone.
T. (02) 353 900 40 F. (02) 353 910 03
M. 012 2927 2920
info@marryatscott.com.eg
marryatscott.com.eg